




GAS WATER HEATER SCHEDULE

ITEM	DESCRIPTION	TRAP ARM	WASTE	VENT	CW	HW	REMARKS
WC-1	WATER CLOSET 1.28 GPF, FT	INT	4"	2"	1-1/2"	---	"AMERICAN STANDARD" MODEL # 3351.128 "AFWALL" ELONGATED WALL MOUNT, 1.28 GPF TOILET WITH "SLOAN" ROYAL MODEL #111-1.28 HIGH-EFFICIENCY MANUAL FLUSHOMETER VALVE, 1.28 GPF, OLSONITE #95 OPEN FRONT ONSONITE #95CC-SS SEAT LESS COVER
WC-2	WATER CLOSET 1.28 GPF - FT - ADA	INT	4"	2"	1-1/2"	---	"AMERICAN STANDARD" MODEL # 3351.128 "AFWALL" ELONGATED WALL MOUNT, 1.28 GPF TOILET WITH "SLOAN" ROYAL MODEL #111-1.28 HIGH-EFFICIENCY MANUAL FLUSHOMETER VALVE, 1.28 GPF, OLSONITE #95 OPEN FRONT ONSONITE #95CC-SS SEAT LESS COVER
U-1	URINAL 1.28 GPF - FT - ADA	INT	2"	2"	1-1/2"	---	"SLOAN" #WES-1000.1001-0.13 WALL HUNG HEU URINAL, WITH "SLOAN" MODEL # WEUS-1000.1201-0.13 SOLIS, SOLAR POWERED HEU FLUSHOMETER.
L-1	LAVATORY ADA	1 1/4"	2"	1 1/2"	1/2"	1/2"	"AMERICAN STANDARD" 0356.028 "LUCERNE" VITREOUS CHINA, WALL HUNG, 8" CENTERS. FAUCET: 0.5 GPM. STOPS BRASSCRAFT #ST-CR19 W/ BC #5130 SUPPLIES. ADA COMPLIANCE.
L-2	LAVATORY ADA	1 1/4"	1 1/2"	1 1/2"	1/2"	1/2"	"KOHLER" LADENA MODEL #K2214 VITREOUS CHINA, WITH OVERFLOW WALL HUNG, 8" CENTERS. FAUCET: SLOAN SOLIS 0.5 GPM. STOPS BRASSCRAFT #ST-CR19 W/ BC #5130 SUPPLIES. ADA COMPLIANCE. COLOR TO BE SELECTED
SS-1	SERVICE SINK	3"	3"	2"	3/4"	3/4"	"FLOORSTONE", MODEL # 80. FAUCET: "JUST" #JVB-1209, WALL MOUNT, VACUUM BREAKER SPOUT W/ PAIR HOOK AND WALL BRACE AND 3/4" MALE THREADED OUTLET.
S-1	SINK	2"	2"	2"	3/4"	3/4"	"JUST" MODEL # S-L-ADA-2233-A-GR, COUNTER MOUNT SINGLE 5" DEEP BOWL, 18 GAUGE TYPE 304, 18-8, STAINLESS STEEL W/ CENTER REAR DRAIN. FAUCET: GROHE, MINTA #32319 DUAL SPRAY PULL DOWN.
S-2	SINK	2"	2"	2"	3/4"	3/4"	"JUST" MODEL # HCL-23520-S WALL MOUNTED SINK, WITH SENSOR OPERATED FAUCET. ADA COMPLIANT. FAUCET: "JUST" MODEL # JSGN-AAC SENSOR OPERATED FAUCET WITH CONTROL MODULE.
FD-1	FLOOR DRAIN	2"/3"	2"/3"	1 1/2"	---	---	"J.R. SMITH" 2005(-SS) WITH TRAP PRIMER CONNECTION. TRAP PRIMER MAY BE PROVIDED BY A FLUSH VALVE ATTACHMENT OR A "PPP" PR-500 RECESSED IN WALL BEHIND ACCESS PANEL WITH A 1/2" BALL VALVE PRECEDING THE TRAP PRIMER, BOTH BEHIND ONE ACCESS PANEL.
EW-1	ELECTRIC WATER COOLER	2"	2"	2"	1/2"	-	"HAWES" #1011, "H4-LO" BARRIER FREE DUAL HEIGHT, WALL MOUNTED, 18 GAUGE, TYPE 304 STAINLESS STEEL, PUSH-BUTTON VALVES FRONT ACCESSIBLE S/S BACK PANEL AND LOUVERED GRILL WITH #6426 IN-LINE FILTER. 120 VOLT.
DF-1	DRINKING FOUNTAIN	-	-	-	1/2"	-	W/DRY WALL
TP-1	PRESSURE DROP TRAP PRIMER	---	---	---	1/2"	---	PPP #P-2, COPPER BODY COMPLETE 1/2" COPPER TYPE "L" PIPE TO RECEPTOR(S). INSTALL PER MANUF. RECOMMENDATIONS AND PROVIDE ACCESS PANEL
HB-1	HOSE BIBB	---	---	---	3/4"	---	"J.R. SMITH" #5906 NON FREEZE ROOF HYDRANT.
HB-2	HOSE BIBB	---	---	---	3/4"	---	"J.R. SMITH" #5810 NON FREEZE GROUND HYDRANT.
GD-1	GARBAGE DISPOSER	---	---	---	---	---	"IN-SINK-ERATOR" MODEL # SS-50. 1/2 HP DISPOSER.

ITEM	LOCATION	SERVICE	TYPE	HOT WATER CAPACITY AT 60°F	BTU/HR INPUT	ELECTRICAL DATA		MANUFACTURER & MODEL NO.	OPERATING WEIGHT LBS.	REMARKS
						VOLT	HZ			
	ROOF	DOMESTIC HOT WATER	TANKLESS/ OUTDOOR	4.8 GPM	199,000	120	60	NORITZ NC 199-0D	110	23.6"(HEIGHT) X 13.8"(WIDTH) X 10.6"(DEPTH). SC-201-6M MULTI-SYSTEM CONTROLLER (SINGLE MANIFOLD), 120 VAC. SET @ 122°F
	ROOF	DOMESTIC HOT WATER	TANKLESS/ OUTDOOR	4.8 GPM	199,000	120	60	NORITZ NC199-0D	110	23.6"(HEIGHT) X 13.8"(WIDTH) X 10.6"(DEPTH). SC-201-6M MULTI-SYSTEM CONTROLLER (SINGLE MANIFOLD), 120 VAC.

PUMP SCHEDULE											
ITEM	SERVICE	MANUFACTURER AND MODEL	TYPE	CAPACITY		HP	RPM	VOLTS	PHASE	WGT	REMARKS
				GPM	HEAD, FT						
	HOT WATER GWH-1	B&G SERIES PR	INLINE	5	15	1/6	1750	120	1	50	INLINE CIRCULATING PUMP FOR DOMESTIC HOT WATER WITH TC-1 (AUTOMATIC TIMER KIT) AND AQ (AQUATAT).

EXPANSION TANK SCHEDULE							
ITEM	SERVICE	MANUFACTURER AND MODEL	TANK VOL.	OPER. WT.	MAX. TEMP.	DIMENSIONS	REMARKS
ET 1	DOMESTIC HOT WATER GWH-1	WATTS PLT-5	2.1 GAL	5.5 LBS	200°F	8" DIA., 11" LONG	DRAWN STEEL W/BUTYL DIAPHRAGM
ET 2	DOMESTIC HOT WATER GWH-2	WATTS PLT-5	2.1 GAL	5.5 LBS	200°F	8" DIA., 11" LONG	DRAWN STEEL W/BUTYL DIAPHRAGM

PIPE SIZE CHART			
SIZE	CW		HW
	F.V.	F.T.	F.T.
1/2"	0	1	1
3/4"	0	6	6
1"	0	13	13
1-1/4"	0	24	24
1-1/2"	10	47	47
2"	64	158	120
2-1/2"	245	380	246
3"	630	691	412
MAX. VELOCITY C.W.(8 F.P.S.)			MAX. VELOCITY H.W.(5 F.P.S.)

ALL PIPE SIZING BASED ON 3.0 PSI PER
100 FT. FRICTION LOSS.

[illegible]

WATER FIXTURE UNIT CHART 2010 GPC & UPC.		
FIXTURE	CW FU	HW FU
WC (WATER CLOSET) FLUSH VALVE	5	–
L (LAVATORY)	1	1
S (SINK)	2	2
SS (SERVICE SINK)	3	3
HB (HOSE BIBB)	2.5	–
EACH ADDITIONAL HB	1	

DRAINAGE FIXTURE UNIT CHART 2010 CPC & UPC.	
FIXTURE	FU
WC (WATER CLOSET)	4
L (LAVATORY)	1
S (SINK)	2
SS (SERVICE SINK)	3
FD	2
FS	1

PROJECT

KoningEisenberg Architecture
1454 25th St, Santa Monica, CA 90404

310.828.6131 info@kearch.com
310.828.0719 fax www.kearch.com

ARCHITECT'S PROJECT NO.

1001

ARCHITECT

All designs, ideas, arrangements and plans indicated by these drawings are the property and copyright of the Architect and shall neither be used on any other work nor be disclosed to any other person for any use whatsoever without written permission.

Koning Eizenberg Architecture and/or its principals and employees waives any and all liability or responsibility for problems that may occur when these plans, drawings, specifications, and/or designs are followed without the professional's guidance with ambiguities, or conflicts which are alleged.



GLUMAC

617 W. 7th Street, Suite 500
Los Angeles, CA 90017
T. 213.239.8888 F. 213.239.8816
www.glumac.com
Job No.: 08.11.0092
Contact: E. LEE

engineers for a sustainable future™

CONSULTANT



1437 4TH STREET, SUITE 300
SANTA MONICA, CA 90401
TEL. (310) 458-2205
FAX. (310) 399-1541
architecture@smgov.net

DATE: _____ 20____
SUBMITTED BY: _____

DATE: _____ 20____
APPROVED BY: _____

APPROVED BY :
Miriam Mulder,
Architecture Services Manager

CITY OF SANTA MONICA
DEPARTMENT OF PUBLIC WORKS

REVIEWED BY: DATE: _____ 20 ____

REVIEWED BY: DATE: _____ 20 ____

REVIEWED BY: DATE: _____ 20 ____

CITY CLIENT

[illegible]

ISSUE

PLAN CHECK CORRECTIONS

DATE
05/07/2012

DRAWING NO. **6693**

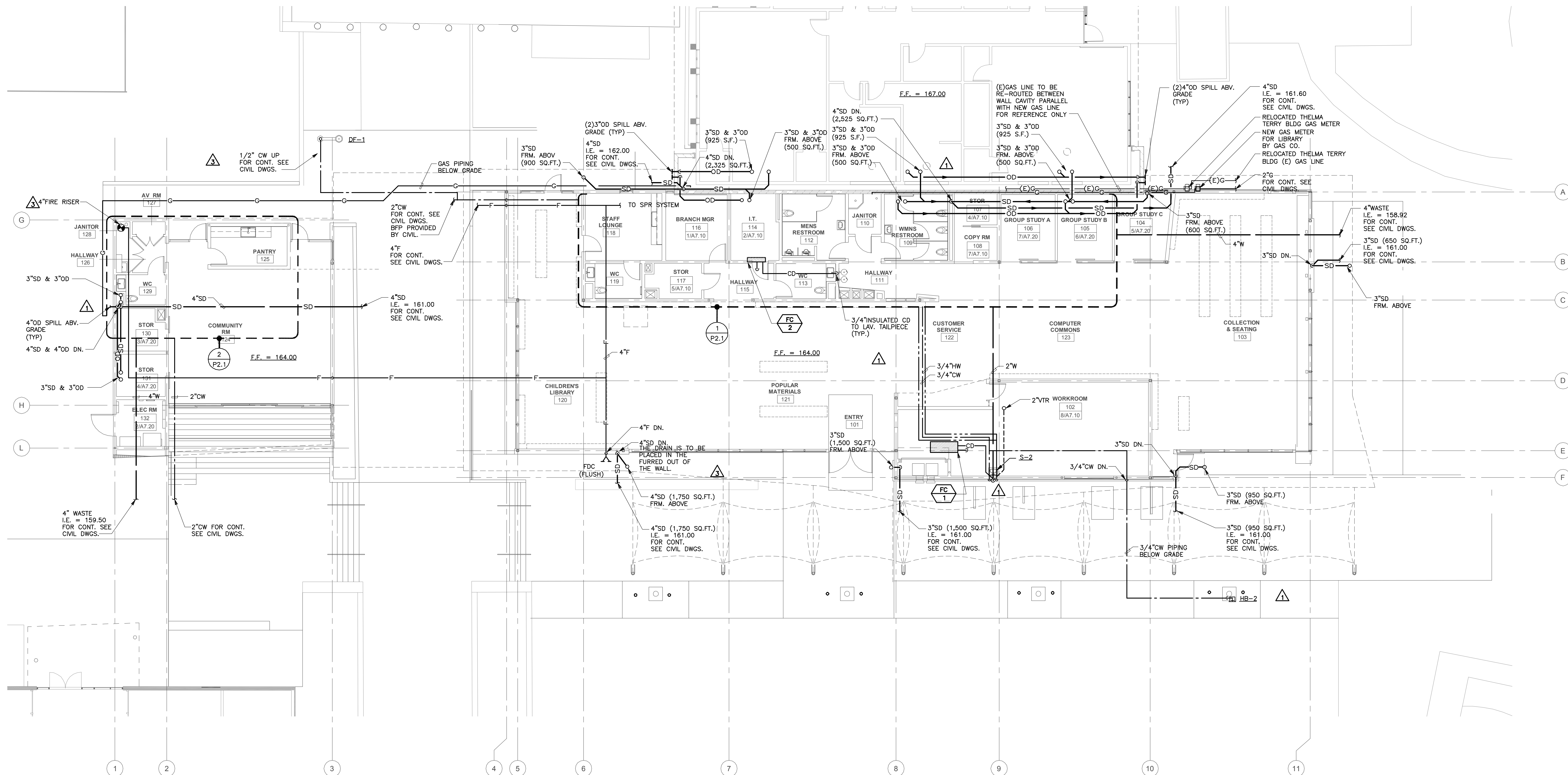
SHEET TITLE

**PLUMBING
SCHEDULES**

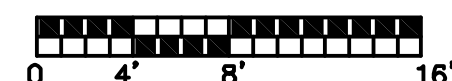
SHEET NO.

P0.2

P0.2



1 PLUMBING PLAN
SCALE: 1/8"=1'-0"



PICO BRANCH LIBRARY

2201 Pico Blvd.
Santa Monica, CA 90404

PROJECT

KoningEisenberg Architecture

1454 28th St. Santa Monica, CA 90404

310.828.6131 info@ksearch.com
310.528.0719 fax www.ksearch.com

ARCHITECT'S PROJECT NO.

1001

ARCHITECT

All designs, ideas, arrangements and plans indicated by these drawings are the property and copyright of the Architect and shall neither be used on any other work nor be disclosed to any other person for any use whatsoever without written permission.

Koning Eisenberg Architecture and/or its principals and employees waives any and all liability or responsibility for problems that may occur when these plans, drawings, specifications, and/or designs are followed without the professional's guidance with ambiguities, or conflicts which are alleged.



GLUMAC

617 W. 7th Street, Suite 500
Los Angeles, CA 90017
T: 213.239.8666 F: 213.239.8616
www.glumac.com
JOB NO.: 06-11-0012
CONTACT: E. LEE

engineers for a sustainable future™

CONSULTANT

City of Santa Monica
Architecture Services

1437 4TH STREET, SUITE 300
SANTA MONICA, CA 90401
TEL: (310) 458-2205
FAX: (310) 399-1541
architecture@smgov.net

SUBMITTED BY: DATE: 20

APPROVED BY: DATE: 20

Minim Muller,
Architecture Services Manager
CITY OF SANTA MONICA
DEPARTMENT OF PUBLIC WORKS

REVIEWED BY: DATE: 20

REVIEWED BY: DATE: 20

REVIEWED BY: DATE: 20

CITY CLIENT

NO.	DATE	BY	DESCRIPTION
1	05/07/12		PLAN CHECK 1
2	03/05/12		ADDENDUM 3
3	02/21/12		ADDENDUM 2
REVISIONS			

ISSUE

PLAN CHECK CORRECTIONS

DATE: 05/07/2012

DRAWING NO. 6693

SHEET TITLE

PLUMBING
PLAN

SHEET NO.

P2.0

